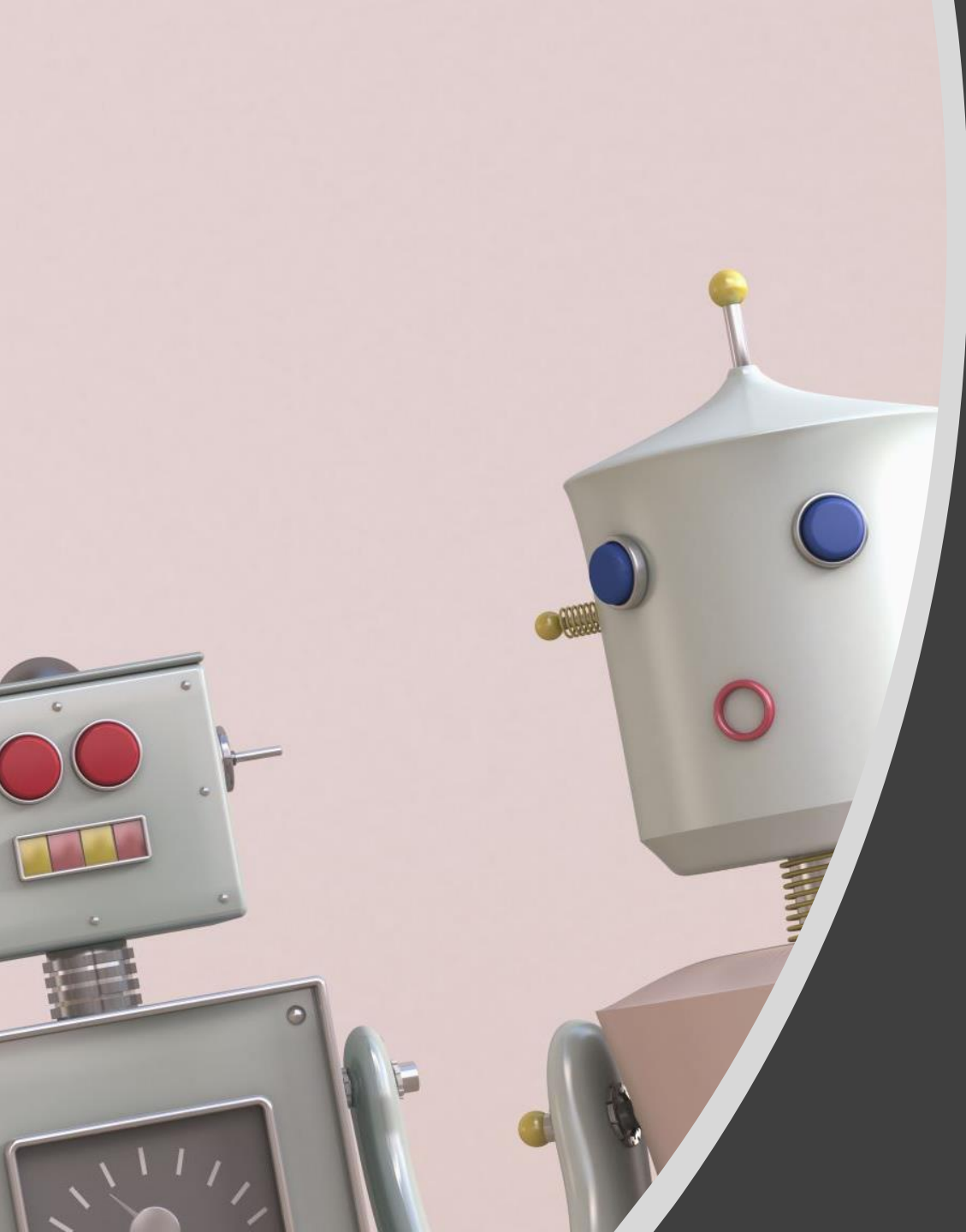


Drawing

A large, light gray oval shape is centered on the left side of the page. Inside this oval, the word "Drawing" is written in a bold, black, sans-serif font. To the right of the text, there is a small, solid gray circle. Below the text and the gray circle, a thick, orange curved line starts from the bottom left and curves upwards and to the right, ending near the gray circle, forming a stylized smiley face.



Part 1 Faces



Image Credit: <https://news.microsoft.com/features/how-high-speed-internet-is-bringing-people-out-of-the-dark-ages-to-reshape-work-and-life-in-rural-america/>

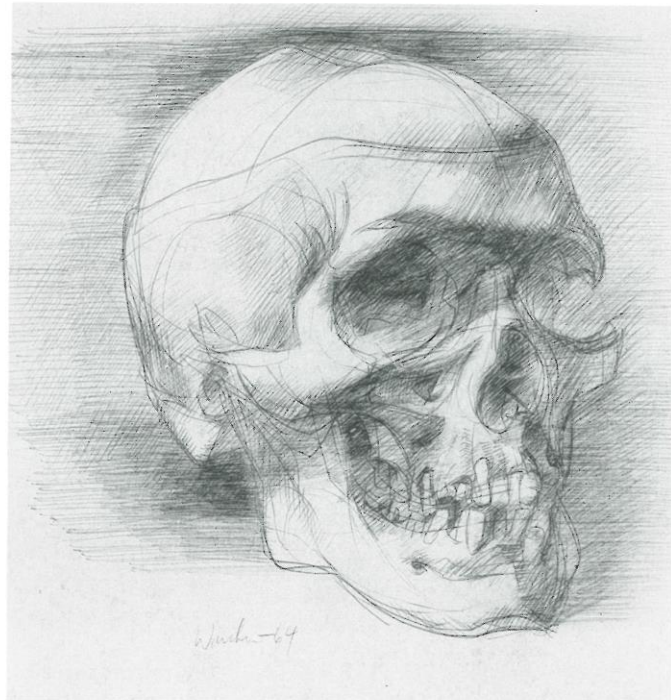
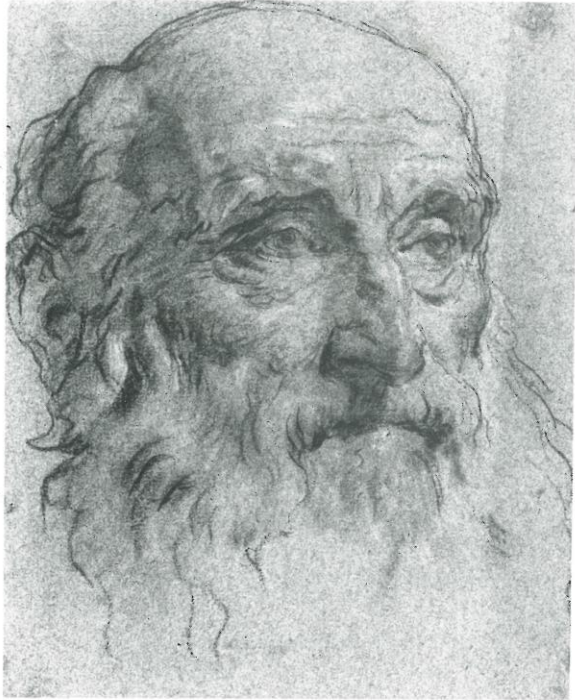


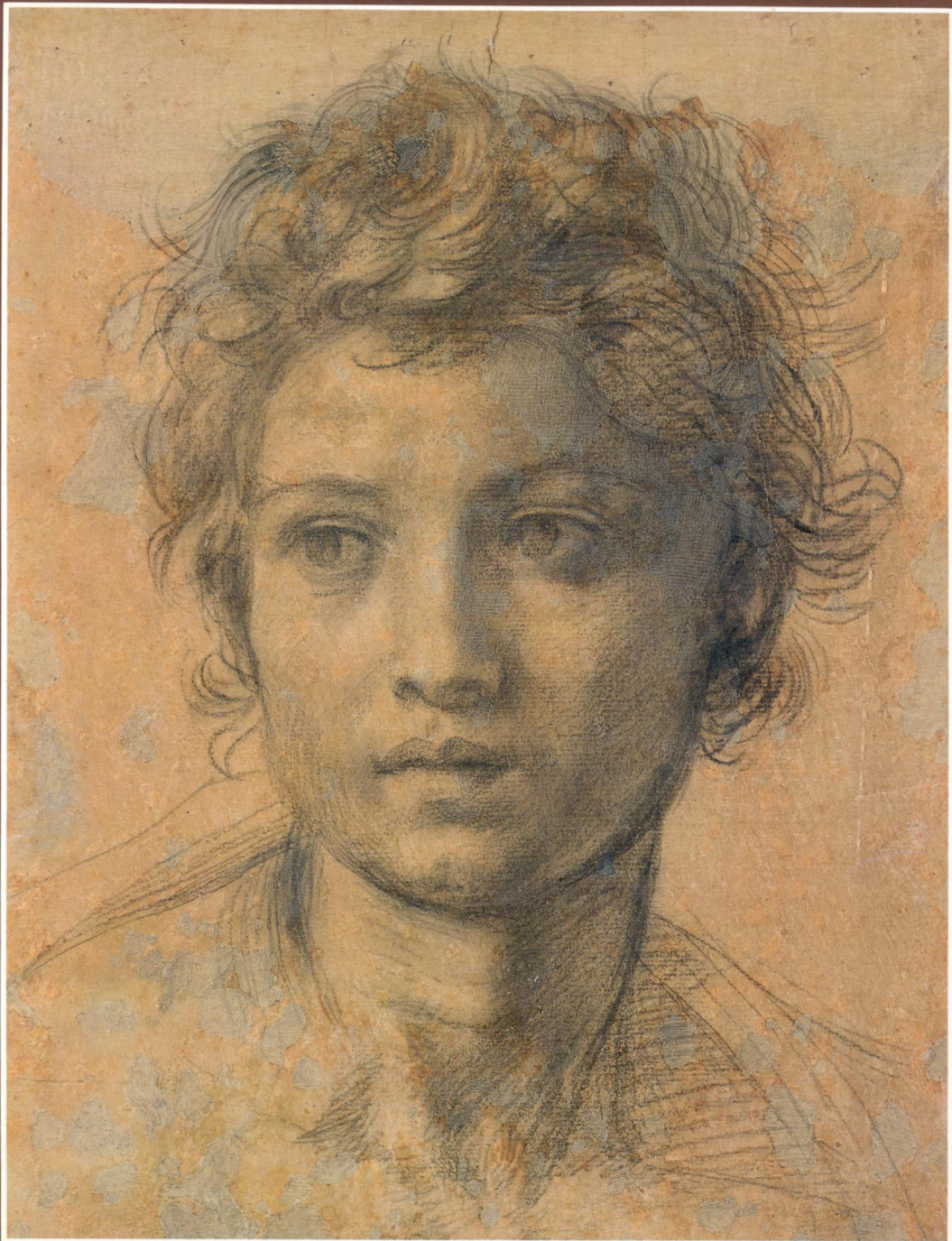
Image Credit:
<https://www.accessart.org.uk/drawing-portraits/?print=print>

Benefits

Drawing skills
Deep Observation
Mindfulness
Being Present







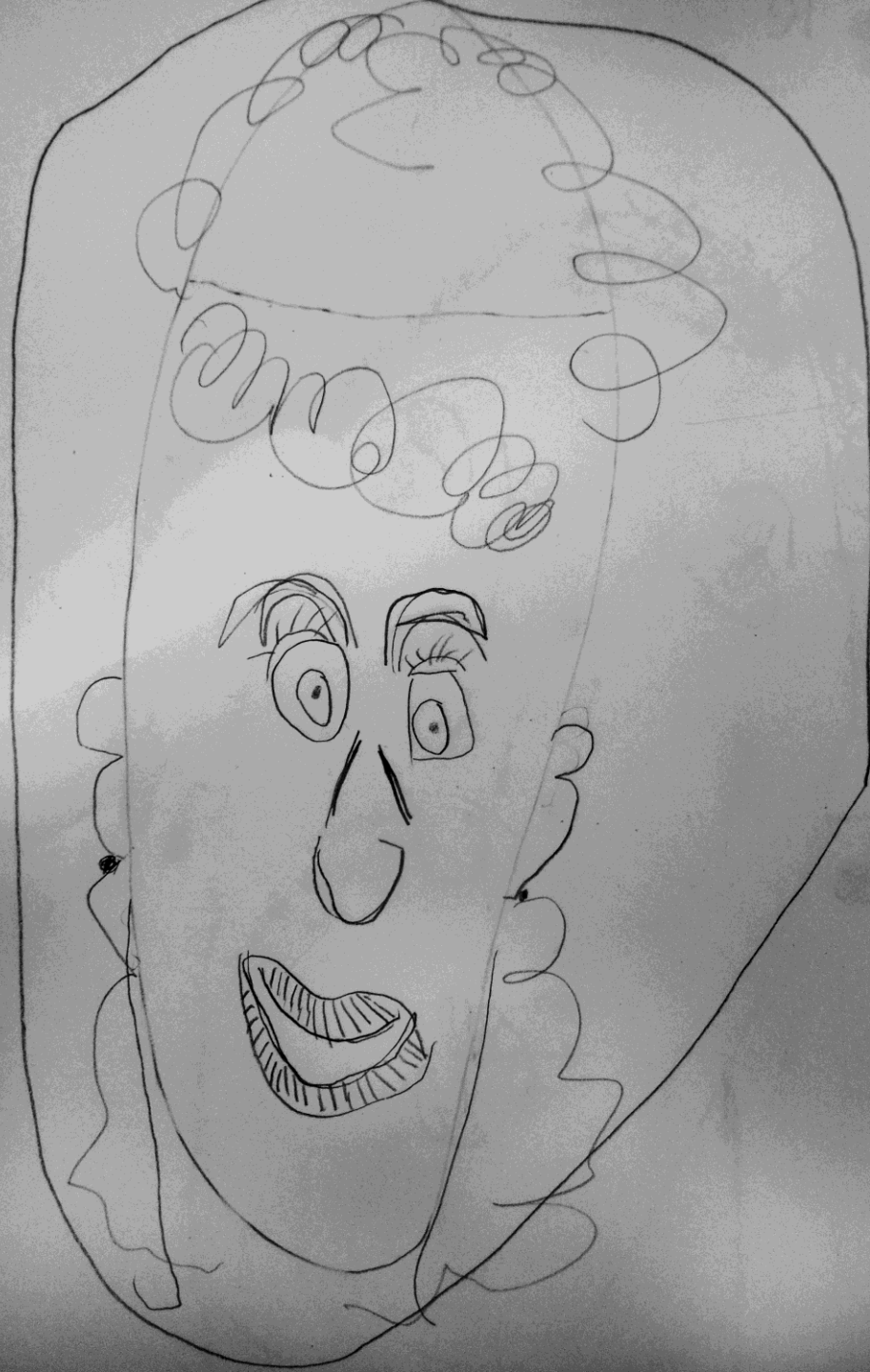






















Noah Mann-Brewer

Rian Turner

Mr. Mills

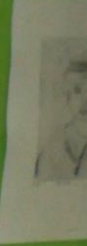
Printmaking

Artist in Residence
Jean Roubert

Thanks to Wellington
Thank you to Adam MacDonnell

Artists'

Dr



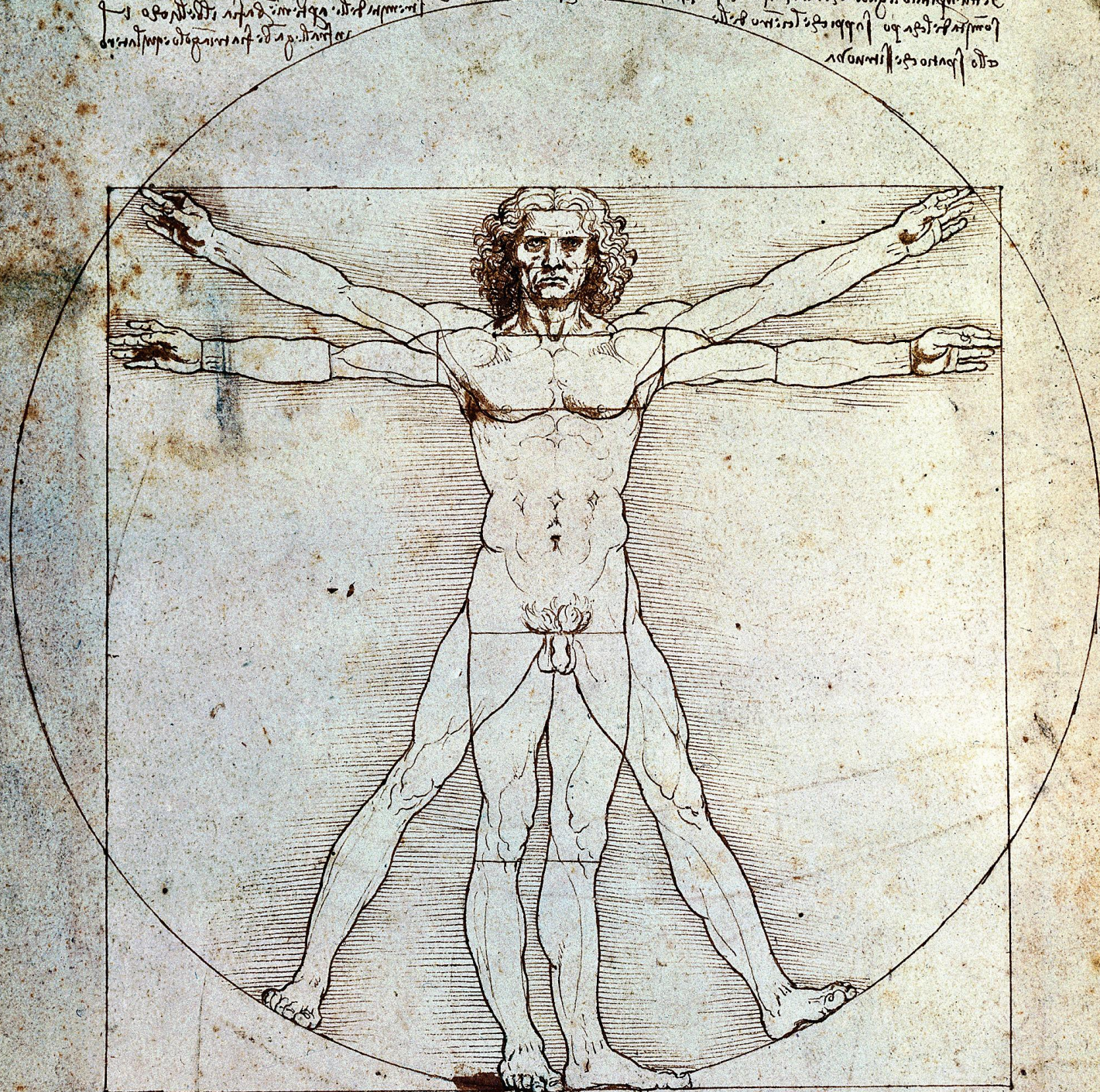
Face Mapping

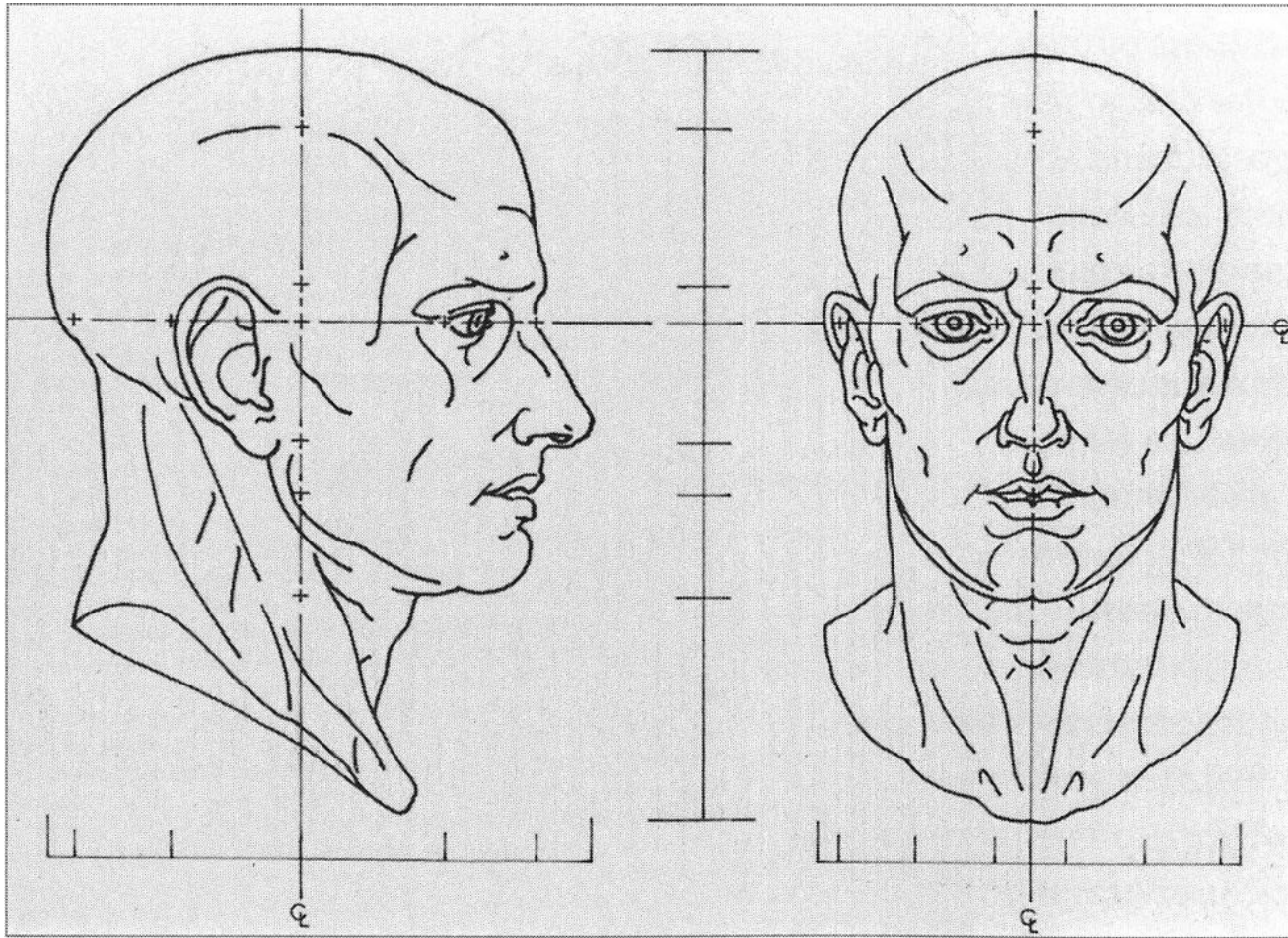
Face mapping is a technique used to set up the proportion of the features on a face.

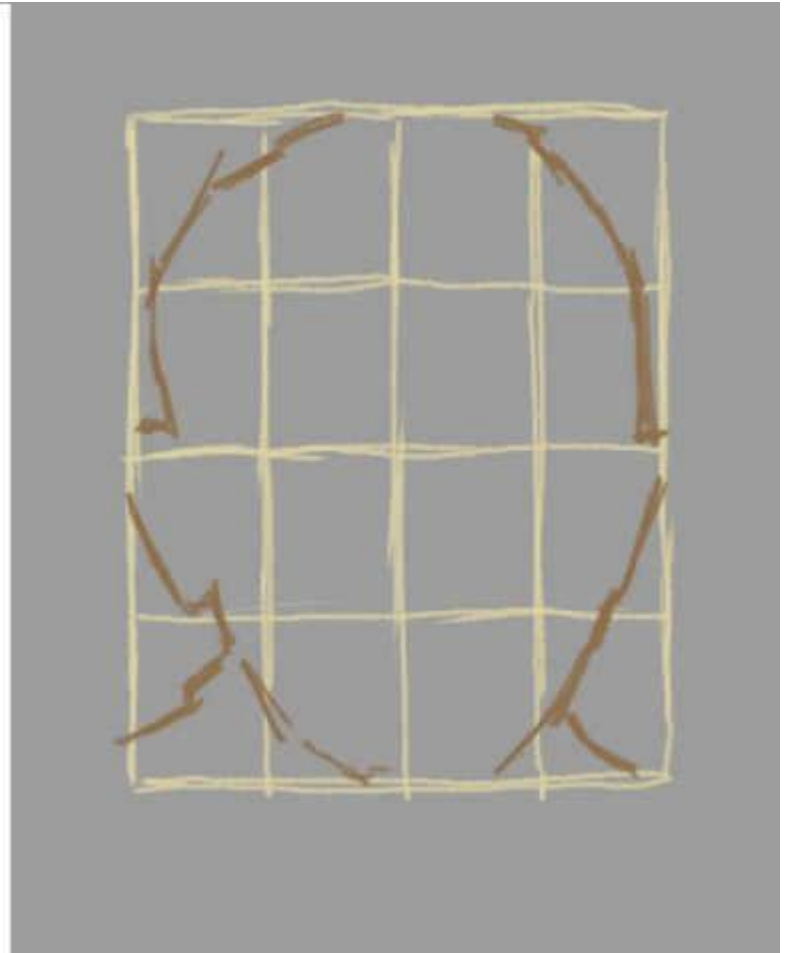
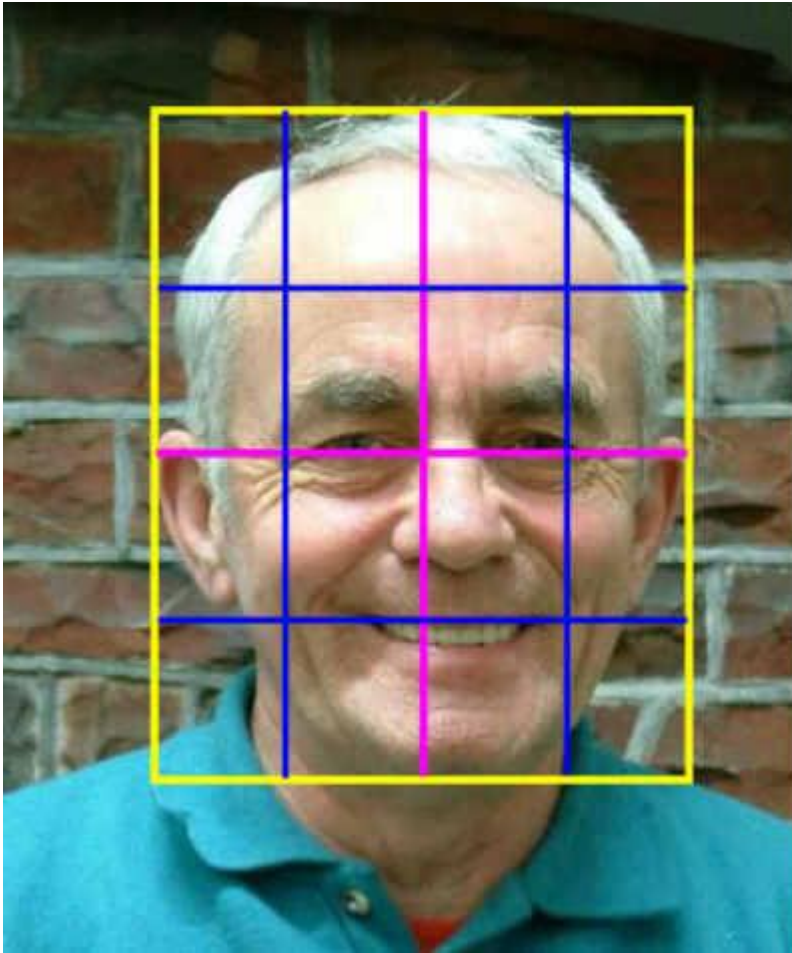


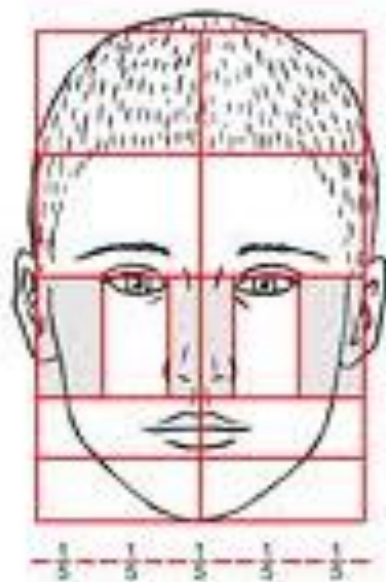
Handwritten text in a cursive script, likely a Latin inscription, located at the top left of the page.

Handwritten text in a cursive script, likely a Latin inscription, located at the top right of the page.







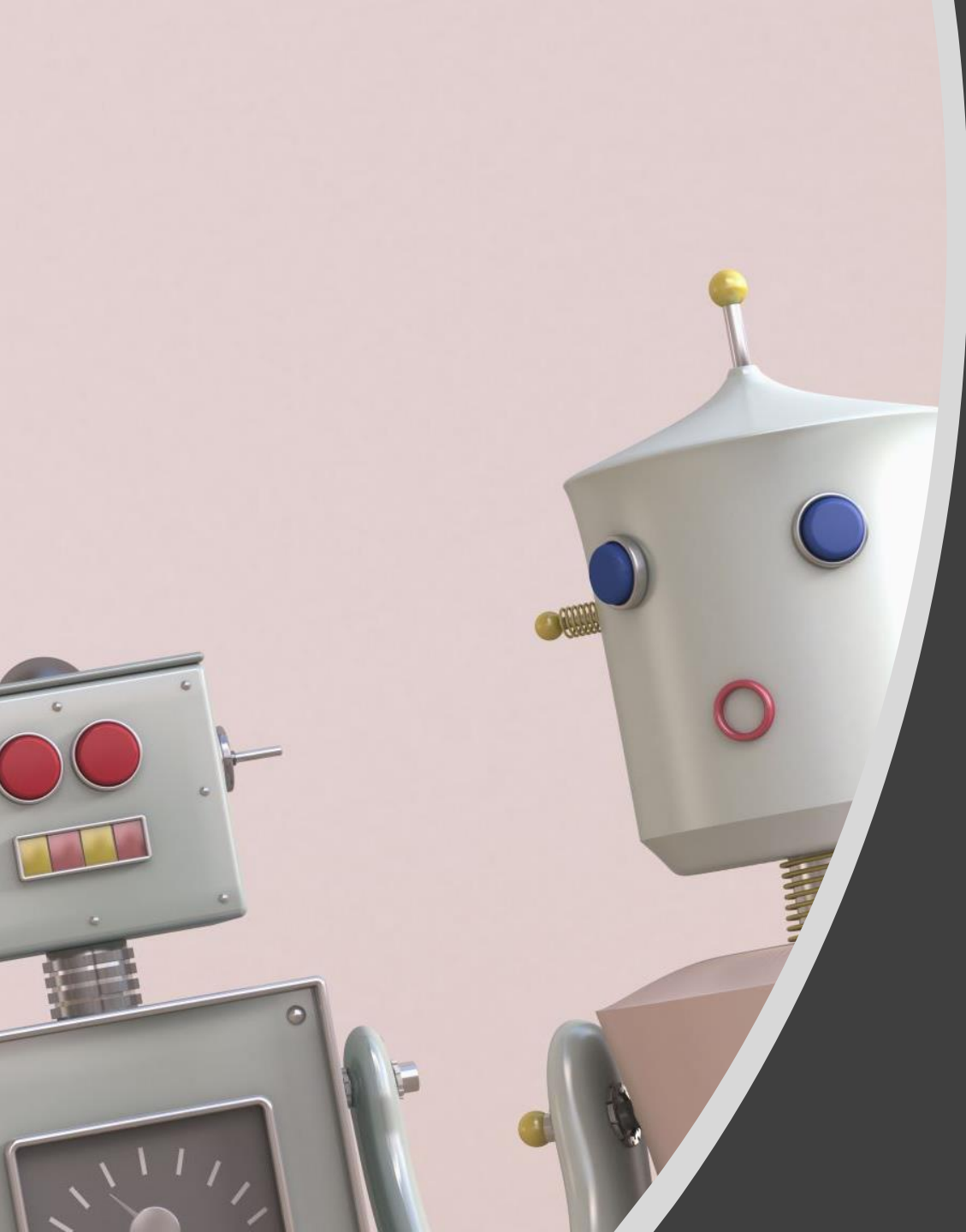




Let's play

Try draw a face

- Someone else
- Yourself (look in the mirror)
 - From Imagination



Part 2 Funny Faces

Try exaggerating the features.

Use Lynda Barry's Techniques
Of replacing features of the
face with numbers and letters
or shapes.

Check out Lynda Barry – The
Near-sighted Monkey.





EG

L. Müller / 1875



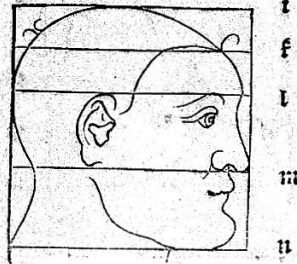




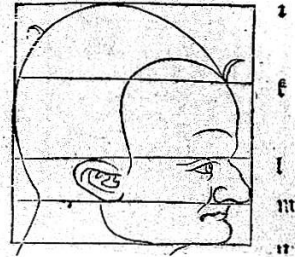
ALBERTI DVRERI

Hac facies habet duas lineas
k.l. valde elatas, fed.m.
in medio.l.n. ponitur.

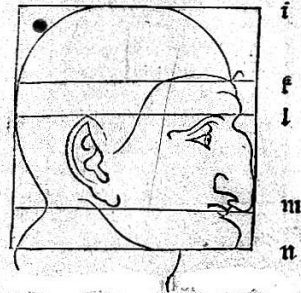
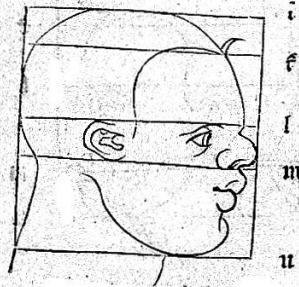
Hac verò admodum demif-
sam habet.l.&.m.fed.k.
stat in medio.l.l.



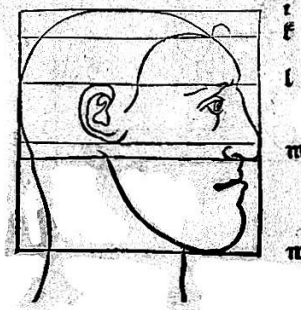
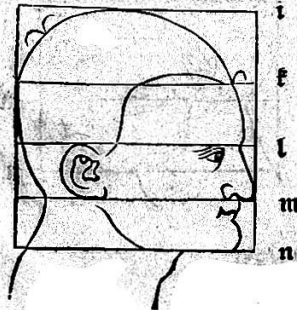
In hac facie est k.&.m.
sursum mota.



In hac contra k.&.m.
mota deorsum.

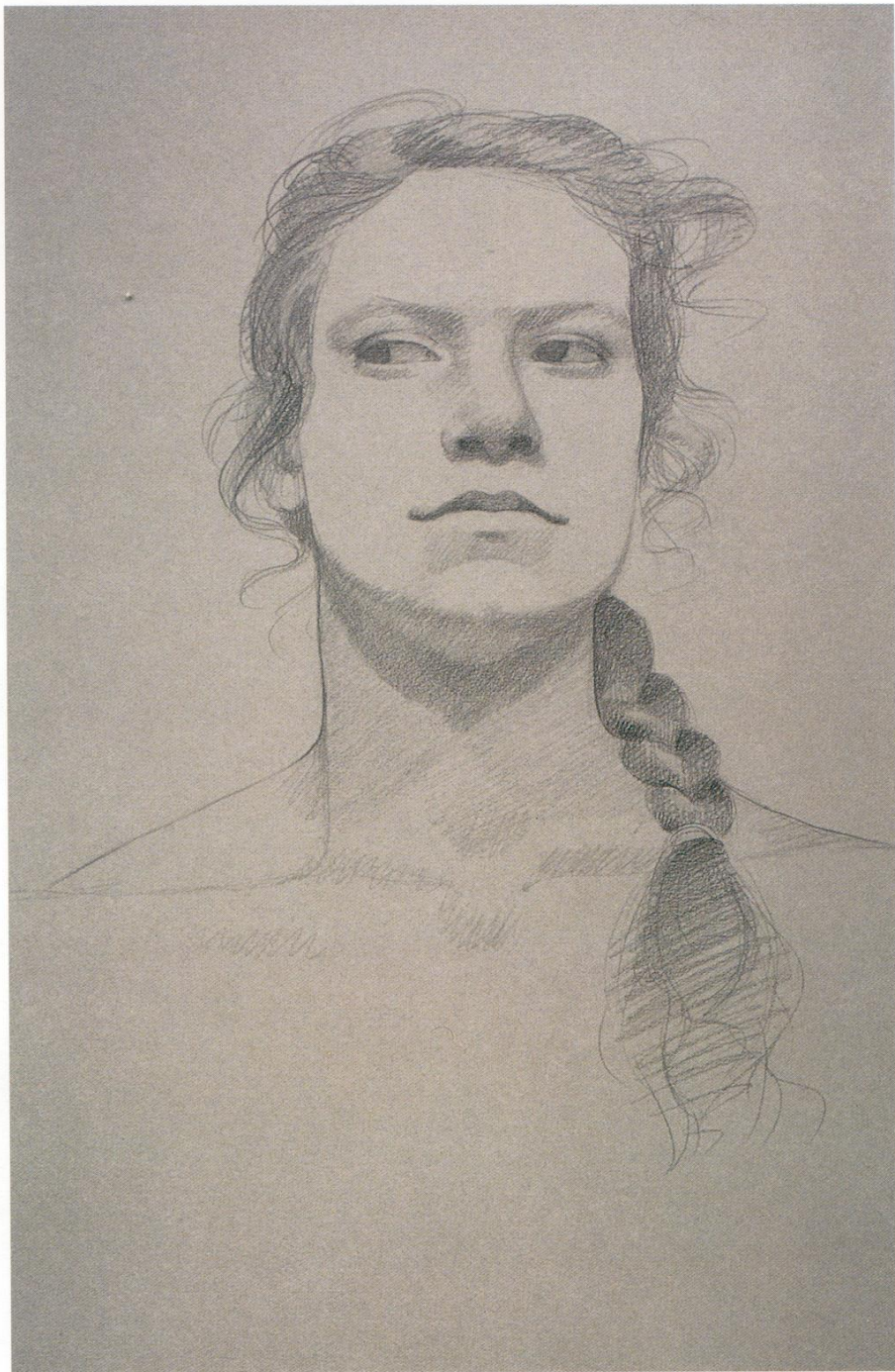


Sunt præter dictas motiones harum trium linearum.k.l.m.& hæc duæ.prior, vt
summum spatium intra.l.k. sit altissimum, proximum autem intra.k.l. minus al-
tum, minus etiam sequens intra.l.m. minime verò imum.intra.m.n. In altera hæc
inuertuntur sed conuenienter, vt subiectis exemplis declaratur.



When an algorithm recognizes
your drawing as a real face
Try Snap chat your drawing and
add a filter. Use some of these
drawings and try apply a camera
filter. Have fun.





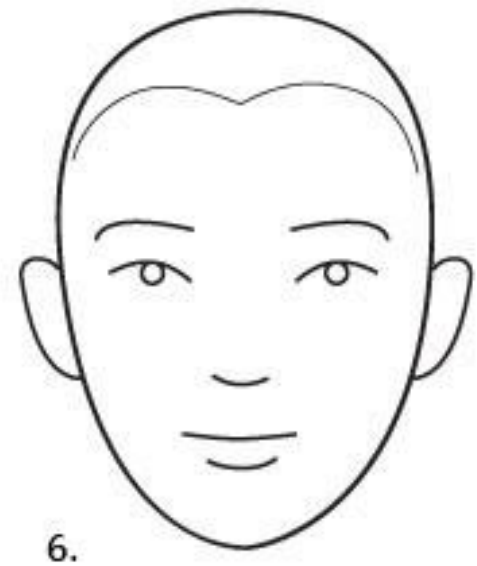
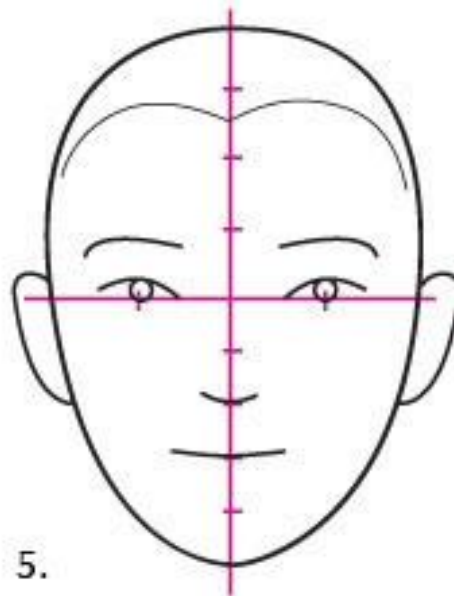
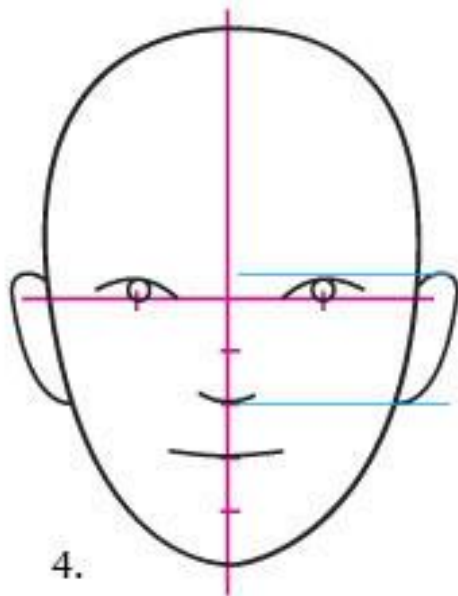
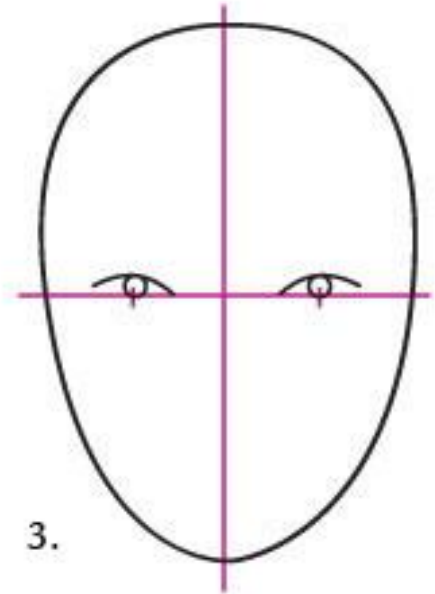
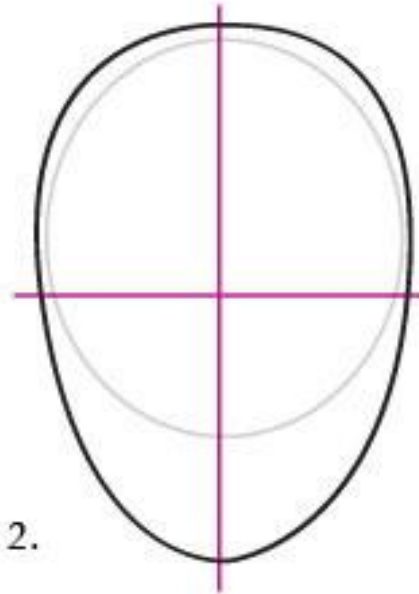
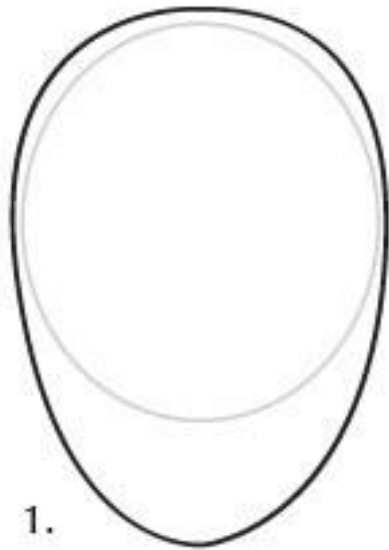


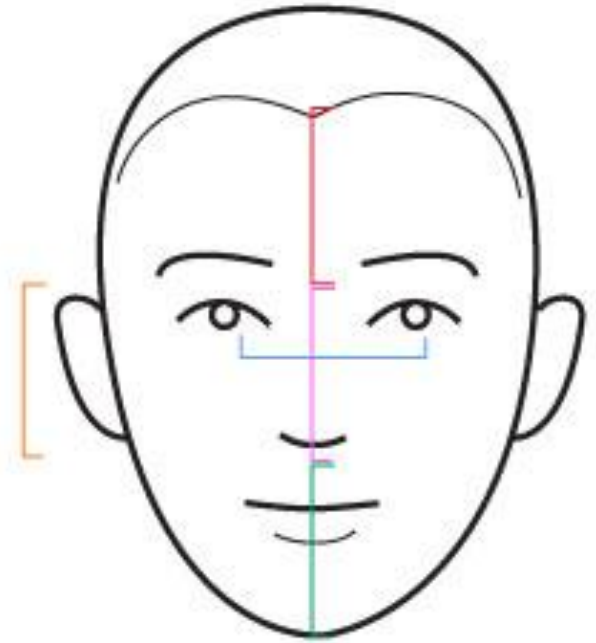
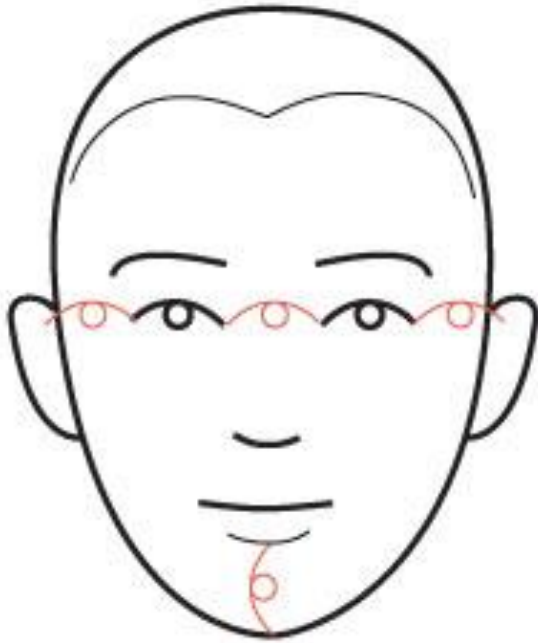












Thank You

Jean Rooney

www.jeanrooney.art